



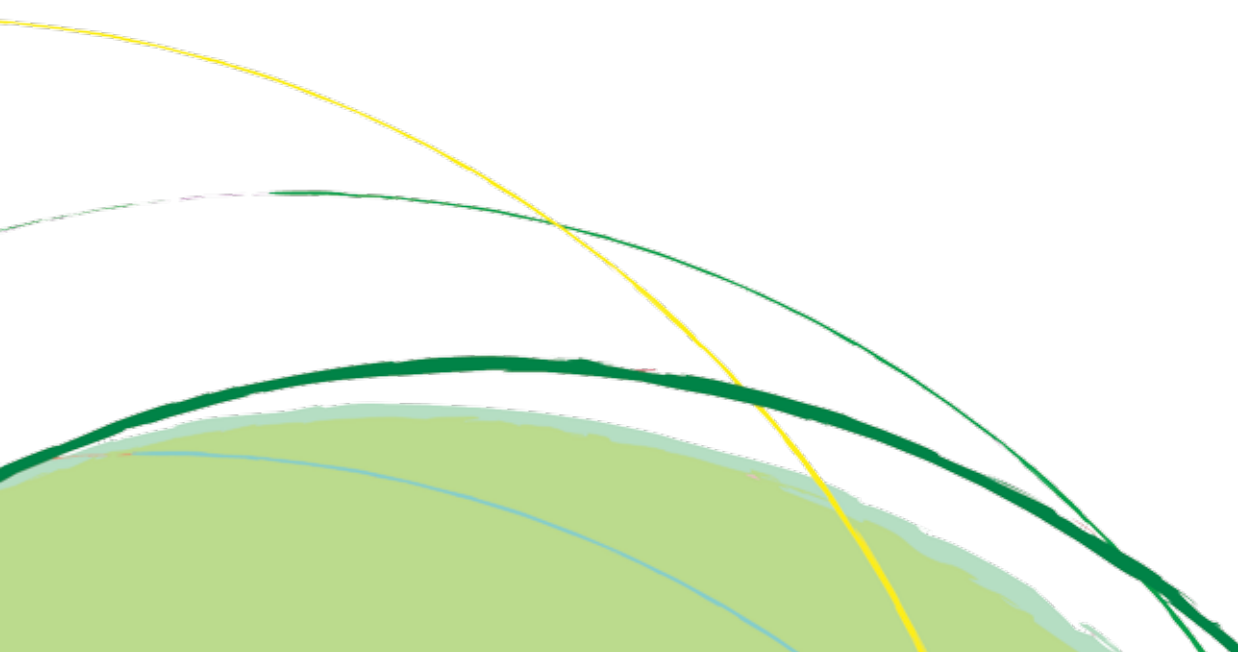
Annual Report
2015

CORPORATE VISION

To be Malaysia's leading producer of renewable and sustainable quality oil palm and wood based products.

CORPORATE MISSION

To create a strong, viable corporate entity, a first choice employer, continuously improving by harnessing our resources of people, processes and technology contributing to the nation's development.



CONTENTS



Financial Highlights	2	Financial Statements	41
Corporate Information	4	Analysis of Shareholdings	133
Directors' Profile	5	Properties owned by the Group	136
Key Information	10	Notice of Annual General Meeting	139
Corporate Structure	11	Proxy Form	
Chairman's Statement	12		
Corporate Social Responsibility	17		
Statement on Corporate Governance	21		
Statement on Risk Management and Internal Control	33		
Audit Committee Report	36		
Directors' Responsibility Statement	40		

FINANCIAL HIGHLIGHTS

FINANCIAL STATISTICS PERFORMANCE

	2015 RM'000	2014 RM'000	2013 RM'000	2012 RM'000	2011 RM'000
Revenue	1,032,209	1,033,342	1,054,098	1,183,684	870,912
Profit Before Taxation	52,567	79,949	31,269	224,874	206,042
Profit After Taxation	34,445	55,619	22,271	170,666	152,706
Profit Attributable to Equity Holders	31,635	53,133	21,138	168,739	151,436
EBITDA	186,541	190,130	141,533	356,331	304,940
Equity Attributable to Equity Holders	1,769,069	1,751,939	1,708,483	1,393,248	1,248,232

CORPORATE RATIOS

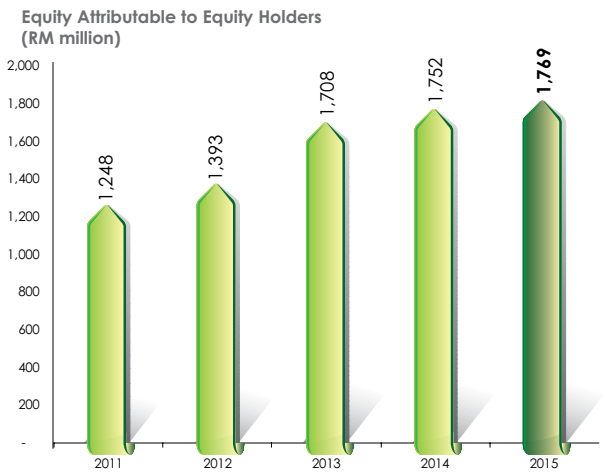
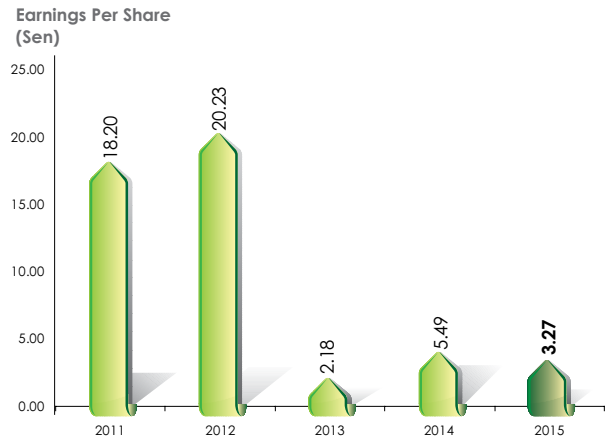
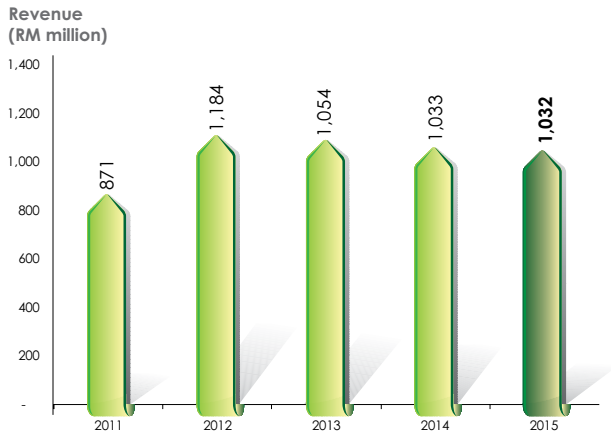
Net Earnings Per share (sen)	3.27	5.49	2.18	20.23	18.20
Net Assets Per Share Attributable to Equity Holders (RM)	1.83	1.81	1.76	4.97	4.68
Net Tangible Assets Per Share (RM)	1.76	1.73	1.66	4.56	4.16
Return on Equity (%)	1.8	3.0	1.2	12.1	12.1
Return on Total Assets (%)	1.0	1.8	0.7	6.4	6.6
Gross Dividend (sen)	1.0	1.5	1.0	5.2	6.0
Gearing Ratio (%)	34	31	32	38	37

PROFIT/(LOSS) BEFORE TAX BY BUSINESS SEGMENTS

	2015 RM'000	2014 RM'000	2013 RM'000	2012 RM'000	2011 RM'000
Timber Operations and Reforestation	74,642	49,826	33,470	73,799	39,530
Oil Palm Operations	(21,495)	33,486	(2,097)	150,848	105,293
Others	(580)	(3,363)	(104)	227	61,219
	52,567	79,949	31,269	224,874	206,042

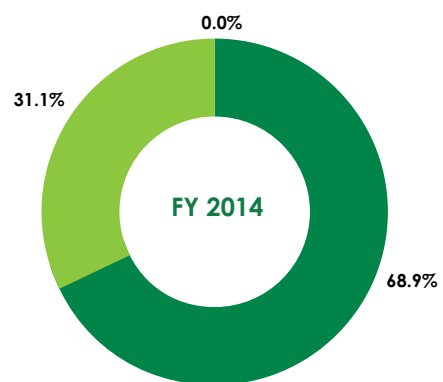
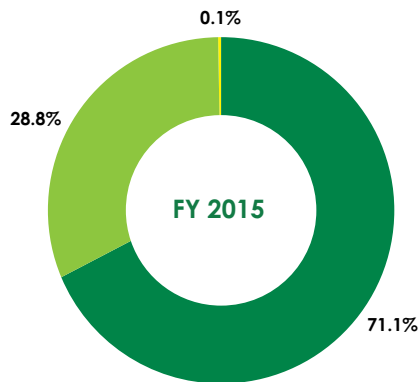


FINANCIAL HIGHLIGHTS (cont'd)



Breakdown of Revenue by Segment
 2015: RM1,032 million
 2014: RM1,033 million

■ Timber Operations ■ Oil Palm Operations ■ Others



CORPORATE INFORMATION

BOARD OF DIRECTORS

GEN (RTD) TAN SRI ABDUL RAHMAN BIN ABDUL HAMID
Independent Non-Executive Chairman

DATO' SRI TIONG CHIONG HOO
Deputy Executive Chairman

DATO' WONG SIE YOUNG
Chief Executive Officer

DATO' SRI DR. TIONG IK KING
Non-Independent Non-Executive Director

MDM TIONG CHOON
Non-Independent Non-Executive Director

MR TIONG CHIONG HEE
Non-Independent Non-Executive Director

MR JOHN LEONG CHUNG LOONG
Independent Non-Executive Director

DATO' WONG LEE YUN
Independent Non-Executive Director

DATUK TALIB BIN HAJI JAMAL
Independent Non-Executive Director

COMPANY SECRETARY

Ms Ngu Ung Huong
MAICSA 7010077

AUDITORS

Ernst & Young
Chartered Accountants
Room 300-303, 3rd Floor
Wisma Bukit Mata Kuching
Jalan Tunku Abdul Rahman
93100 Kuching
Tel : 082-243233
Fax : 082-421287

SHARE REGISTRAR

Symphony Share Registrars Sdn Bhd
Level 6, Symphony House
Pusat Dagangan Dana 1
Jalan PJU 1A/46
47301 Petaling Jaya
Selangor Darul Ehsan, Malaysia
Tel : 03-7849 0777
Fax : 03-7841 8151/52

PRINCIPAL BANKERS

AmBank Berhad
RHB Bank Berhad
CIMB Bank Berhad
OCBC Bank (Malaysia) Berhad
Hong Leong Bank Berhad

REGISTERED OFFICE

No.1-9, Pusat Suria Permata
Lorong Upper Lanang 10A
96000 Sibu, Sarawak
Tel : 084-213255
Fax : 084-213855
E-mail: inquiry@jayatiasa.net

WEBSITE

www.jayatiasa.net

STOCK EXCHANGE LISTING

Main Market
Bursa Malaysia Securities Berhad
Stock Name: JTIASA
Stock Code: 4383



DIRECTORS' PROFILE

Gen (Rtd) Tan Sri Abdul Rahman Bin Abdul Hamid

Independent Non-Executive Chairman

Gen (Rtd) Tan Sri Abdul Rahman Bin Abdul Hamid, aged 76, was appointed to the Board on 27 March 1995. He serves as chairman of the Board and the Audit Committee.

He is a graduate of the Royal Military College, Malaysia and Army Staff College, Camberlay, United Kingdom.

Tan Sri was the Chief of the Malaysian Army and Defence Force between 1992 and 1994 and was the Acting Governor of Penang in 1994. From 1958 to 1994, he served in various capacities and appointments covering operations, training and staff in the Malaysian Armed Forces.

Presently, he is the Chairman of Halex Holdings Berhad, Key Alliance Group Berhad (formerly known as DVM Technology Bhd), an ICT company listed on the ACE Market and AXA Affin Life Insurance Berhad, a joint-venture company of Lembaga Tabung Angkatan Tentera. He is also the Chairman and Director of a few other multinational and private companies incorporated in Malaysia.

Tan Sri has no family relationship with any Director and/or major shareholder of the Company.



Dato' Sri Tiong Chiong Hoo

Deputy Executive Chairman

Dato' Sri Tiong Chiong Hoo, aged 55, was appointed Executive Director on 27 March 1995, re-designated as Managing Director on 26 April 1995 and is the Deputy Executive Chairman since 1 January 2013.

He holds a Bachelor of Law and a Bachelor of Economics degrees from Monash University, Australia and is a registered barrister.

Dato' Sri is a businessman with extensive experience and in-depth knowledge in timber and plantation industries. He is responsible for developing the Group's corporate/business strategy and attaining the long-term growth objectives.

He is the son of Tan Sri Datuk Sir Tiong Hiew King, a major shareholder of the Company. His uncle Dato' Sri Dr Tiong Ik King, sister Mdm Tiong Choon and cousin brother Mr Tiong Chiong Hee are also members of the Board.



DIRECTORS' PROFILE (cont'd)

Dato' Wong Sie Young*Chief Executive Officer*

Dato' Wong Sie Young, aged 56, was appointed Chief Executive Officer on 1 January 2013. He is the Chairman of the Risk Management Committee.

He graduated with a Bachelor of Science in Electrical Engineering degree from University of Arkansas, USA in 1984.

Dato' Wong actively oversees the operations of the Company and the Group. He is a pioneer staff and has been working with the Group for more than 25 years during which time he has acquired extensive experience in the running of the Group's operations. He joined the Group in 1987 and has been involved in the designing and setting up of all the timber processing plants. When the Group began diversifying into the oil palm business in 2002, he was entrusted to oversee the construction projects at the oil palm estates and was involved in the designing and construction of all the palm oil mills.

He has no family relationship with any Director and/or major shareholder of the Company.

Dato' Sri Dr Tiong Ik King*Non-Independent Non-Executive Director*

Dato' Sri Dr Tiong Ik King, aged 65, joined the Board on 27 March 1995. He is a member of the Remuneration Committee and the Nomination Committee.

Dato' Sri Dr Tiong graduated with a M.B.B.S degree from the National University of Singapore in 1975 and subsequently obtained his M.R.C.P. from the Royal College of Physicians, UK in 1977.

Dato' Sri Dr Tiong has extensive experience in many industries including media and publishing, information technology, timber, plantation and manufacturing industries.

Currently, he also serves on the Board of Media Chinese International Limited, a listed company in both Hong Kong and Malaysia, and RH Petrogas Limited, a listed company in Singapore.

Dato' Sri Dr Tiong is the brother of Tan Sri Datuk Sir Tiong Hiew King, a major shareholder of the Company. His nephews, Dato' Sri Tiong Chiong Hoo and Mr Tiong Chiong Hee and his niece Mdm Tiong Choon are also members of the Board.



DIRECTORS' PROFILE (cont'd)

Mdm Tiong Choon

Non-Independent Non-Executive Director

Mdm Tiong Choon, aged 46, was appointed to the Board on 3 May 1999.

She holds a Bachelor of Economics degree from Monash University, Australia. She has been with Rimbunan Hijau Group since 1991 and served in various managerial and senior positions in plantation and hospitality sectors.

Currently, she is a non-independent and non-executive director of Media Chinese International Limited, a listed company in both Hong Kong and Malaysia.

She is the daughter of Tan Sri Datuk Sir Tiong Hiew King, a major shareholder of the Company. Her uncle Dato' Sri Dr Tiong Ik King, brother Dato' Sri Tiong Chiong Hoo and cousin brother Mr Tiong Chiong Hee are also members of the Board.

**Mr Tiong Chiong Hee**

Non-Independent Non-Executive Director

Mr Tiong Chiong Hee, aged 41, was appointed to the Board on 14 May 1999.

He holds a Bachelor of Commerce degree from University of Melbourne, Australia.

He is the Managing Director of Mafrica Corporation Sdn Bhd, a company with operations in logging (both in Malaysia and Overseas), oil palm plantations and aquaculture prawn farming since 1997.

He is the nephew of Tan Sri Datuk Sir Tiong Hiew King, a major shareholder of the Company. His uncle Dato' Sri Dr Tiong Ik King, cousin brother Dato' Sri Tiong Chiong Hoo and cousin sister Mdm Tiong Choon are also members of the Board.



DIRECTORS' PROFILE (cont'd)

**Mr John Leong Chung Loong***Independent Non-Executive Director*

Mr John Leong Chung Loong, aged 68, was appointed to the Board on 28 March 2002. He serves as the Chairman of the Remuneration Committee and is a member of the Audit Committee and Nomination Committee.

He holds a Bachelor of Economics degree majoring in Accounting from Sydney University, NSW, Australia.

He is an Approved Company Auditor and a member of several professional bodies, including the Australian Society of Certified Practising Accountants, Malaysian Institute of Accountants, Malaysian Institute of Certified Public Accountants and Malaysian Institute of Taxation (Associate). He started his career as an Accountant in Tractors Malaysia Berhad, Sandakan Branch in 1972 and left in 1973 to join John Liaw & Co as an audit manager. He was a Partner of Liaw, Leong, Wong & Co from 1986 to 1997 and a Partner of Ernst & Young from 1997 to 2001.

He has no family relationship with any Director and/or major shareholder of the Company.

**Dato' Wong Lee Yun***Independent Non-Executive Director*

Dato' Wong Lee Yun, aged 62, was appointed to the Board on 21 June 2007. She is a member of the Audit Committee.

She is a Certified Public Accountant by profession.

She has extensive experience in investment banking, finance and strategic planning for investments projects, as well as acquisition of strategic businesses. She was Head of Corporate Finance at Permata Chartered Merchant Bank and went on to head Corporate Finance at Chase Manhattan Bank. From 1991 to 1996, she was Director of Finance and Strategy for the Renong Group of Companies. She became the Chief Executive of Jaya Tiasa Holdings Berhad from 1997 to 2000. She was also a Director of Sin Chew Media Corporation Bhd from 2004 to early 2008. In addition, she holds directorship in several private limited companies.

She has no family relationship with any Director and/or major shareholder of the Company.

DIRECTORS' PROFILE (cont'd)

Datuk Talib Bin Haji Jamal*Independent Non-Executive Director*

Datuk Talib Bin Haji Jamal, aged 63, was appointed to the Board on 12 November 2007. He is the Chairman of the Nomination Committee and is a member of the Audit Committee and Remuneration Committee.

Datuk Talib holds a Master of Science in Mechanical Engineering from Cranfield Institute of Technology, England, United Kingdom.

Datuk Talib has served in various senior capacities and positions in the Police Diraja Malaysia for more than 30 years. He was the Commissioner of Police, Sarawak from 2004 until his retirement in November 2007. He was the Director of Police Cooperatives for 10 years and the Director of Bank Kerjasama Rakyat for 2 years.

Datuk Talib has no family relationship with any Director and/or major shareholder of the Company.



None of the Directors has:

- Any conviction for offences within the past 10 years other than traffic offences.
- Entered into any transaction whether directly or indirectly which has a conflict of interest with the Company.

All the Directors of the Company are Malaysians.

KEY INFORMATION

Forest Concessions

Extraction Quota: 78,000m³ monthly

Main Species: Meranti, Kapor, Keruing, Selangan Batu, Jelutong, Melapi, Mersawa, Nyatoh, Arau, Penyau, Bindang and MLH (mixed light hardwood).

Oil Palm Plantation

Total Land Area: 83,480 hectares

Planted Area*: 69,054 hectares

Matured Area*: 59,202 hectares

Reforestation

Total Land Area: 235,859 hectares

Estimated Plantable Area: 140,377 hectares

Planted Area*: 32,108 hectares

ANNUAL PRODUCTION CAPACITY

Timber Products	Jaya Tiasa Plywood Sdn Bhd	Rimbunan Hijau Plywood Sdn Bhd	Jaya Tiasa Timber Products Sdn Bhd	Total Annual Production Capacity
Plywood	180,000	120,000	120,000	420,000M3
Rotary Veneer	324,000	–	–	324,000M3
Sawntimber	72,000	26,400	14,400	112,800M3
Blockboard	–	12,000	–	12,000M3
Film-Overlay Plywood	–	6,000	–	6,000M3
Sliced-Veneer	–	–	6,000,000	6,000,000M2
Crude Palm Oil				
JT Oil Palm Development Sdn Bhd (Wealth Houses CPO Mill)				486,000MT
Maujaya Sdn Bhd (Daro Jaya CPO Mill)				324,000MT
Maxiwealth Holdings Sdn Bhd (Lassa CPO Mill)				324,000MT

Notes: * As at 30 September 2015

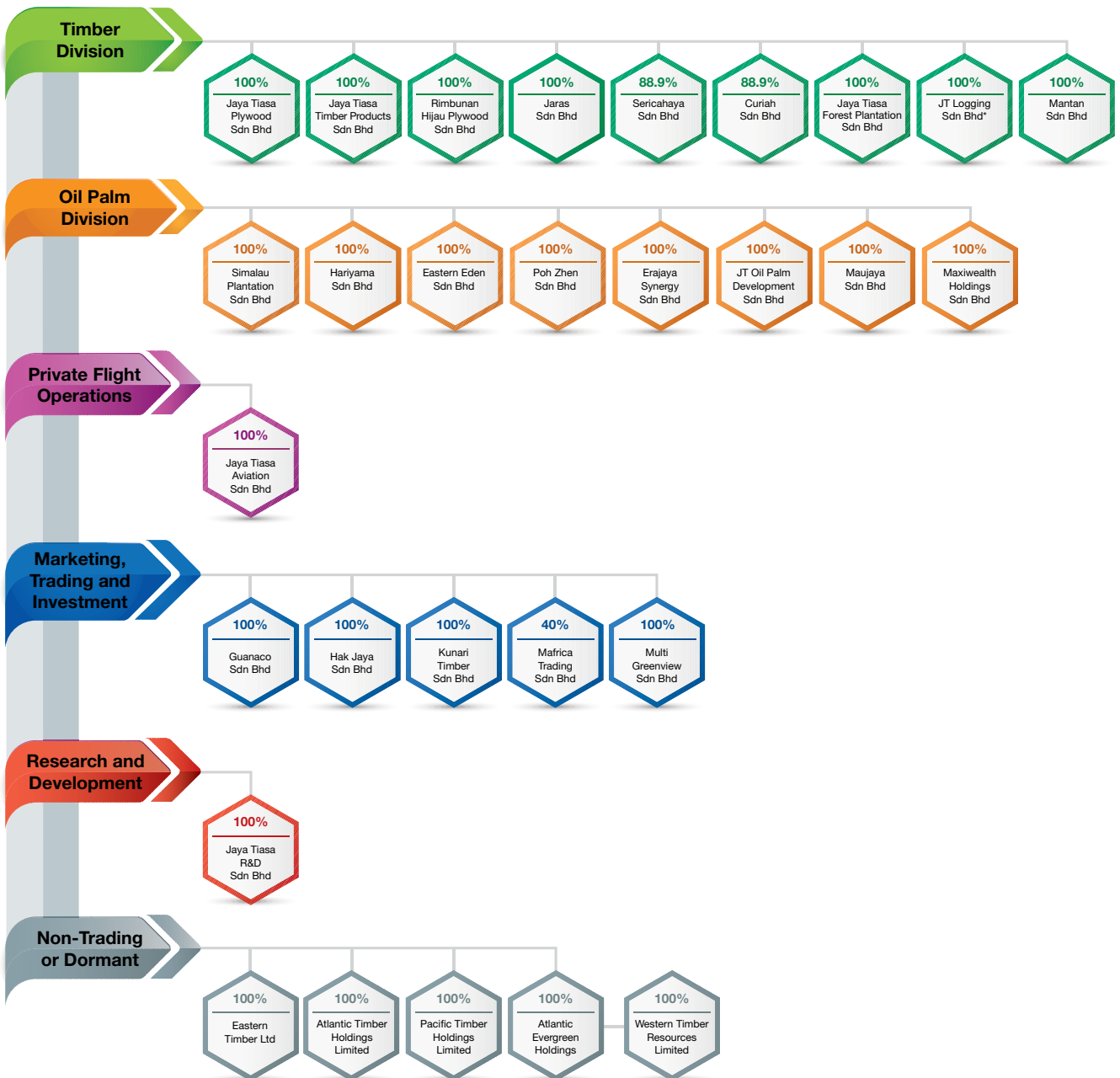
M3 – cubic metre

M2 – square metre

MT – metric tonnes



CORPORATE STRUCTURE



Note :

* Formerly known as Jaya Tiasa Aquaculture Sdn Bhd

